

COOLING

*All prices are subject to change without notice.

Cool-Flex™ - Chrome Radiator Hose Kit



Cool-Flex Radiator Hose Kits come with one length of Cool-Flex corrugated copper tubing, a pair of aluminum billet end covers, two high strength adapters, along with the proper number of reducers and 100% stainless steel hose clamps. Also included you will find a tube of Gel high strength glue for attaching reducers to your radiator or engine, your lifetime warranty and installation instructions. Also available with Blue, Black, Gold, Red and Chrome covers. *(Please call for availability and pricing.)*

Part #	Details	Price
CFI FX1012	1' Length	\$105.95
CFI FX2012	2' Length	\$128.64
CFI FX3012	3' Length	\$154.06
CFI FX5012	44' Length, Radiator Hose Kit	\$228.00

Racing Power Company® - Chrome Cap Stainless Steel Hose Kit



"Radiator" Hose Kits

Each kit includes a length of 1 3/4" O.D. stainless steel hose, two chrome aluminum end cap covers, two 1 3/4" I.D. rubber sleeve adapters, four rubber reducers – (2) 1 1/4" I.D. & (2) 1 1/2" I.D., and four hose clamps.

Part #	Details	Price
RPC R7302	12" SS "Radiator" Hose Kit	\$53.95
RPC R7305	24" SS "Radiator" Hose Kit	\$86.95
RPC R7308	36" SS "Radiator" Hose Kit	\$97.95
RPC R7311	48" SS "Radiator" Hose Kit	\$115.95

"Heater" Hose Kits

Each kit includes two 44" lengths of 3/4" O.D. stainless steel hose, four chrome aluminum end cap covers, four 3/4" I.D. rubber sleeve adapters, four 5/8" I.D. rubber reducers, & eight hose clamps.

Part #	Details	Price
RPC R7314	44" SS "Heater" Hose Kit	\$97.95

Hose Kit Adapters

Part #	Details	Price
RPC S7319	Chrome Radiator Cap (1) fits over 1 3/4" Sleeve Adapter	\$17.95
RPC S7321	Chrome Heater Cap (1) fits over 3/4" Sleeve Adapter	\$12.95
RPC S7317	Radiator Hose Adapter Kit Includes One 1 3/4" Hose Adapter with One 1 1/2" and One 1 1/4" Reducers & 2 Hose Clamps	\$14.95
RPC S7323	Heater Hose Adapter Kit Includes One 3/4" I.D. Rubber Sleeve Adapter, One 5/8" I.D. Rubber Reducer, and Two Hose Clamps	\$3.95



Spectre Performance[®] - Stainless Steel Heater Hose Kits

Heater hose is "304" grade stainless steel braid on high quality EPDM rubber hose. Kit includes 4 feet of hose with 2 red/blue clamps. Not for use with oil.

Part #	Details	Price
SPP 39690	5/8" Heater Hose Kit	\$31.99
SPP 39790	3/4" Heater Hose Kit	\$31.99



Spectre Performance[®] - Stainless Steel Radiator Hose Kits

Radiator hose is "304" grade stainless steel braid over rubber hose. Kit includes one radiator hose with 2 red/blue clamps.

Part #	Details	Price
SPP 58191	1 1/2" x 19" Radiator Hose	\$42.99
SPP 58221	1 1/2" x 22" Radiator Hose	\$42.99
SPP 68181	1 3/4" x 18" Radiator Hose	\$41.99



Billet Specialities[™] - Hose Separators

Machined from billet aluminum with a polished finish. (Sold Separately.)

Part #	Details	Price
BIL 68020	0.440 X 0.540	\$13.95
BIL 68025	0.440 X 0.630	\$13.95
BIL 68120	0.500 x 0.500	\$13.95
BIL 68125	0.540 X 0.630	\$13.95
BIL 68220	0.562 x 0.562	\$13.95
BIL 68225	0.562 x 0.625	\$13.95
BIL 68320	0.625 x 0.625	\$13.95
BIL 68325	0.625 X 0.781	\$13.95
BIL 68420	0.734 X 0.890	\$13.95
BIL 68425	0.734 x 0.969 - #6 A/C Hose	\$13.95
BIL 68520	0.781 x 0.781	\$13.95
BIL 68525	0.781 X 0.906	\$13.95
BIL 68625	0.890 X 0.969	\$13.95
BIL 68720	0.906 x 0.906 - 5/8" Heater Hose, or 12 Braided AN	\$13.95
BIL 68725	0.906 x 1.015 - 3/4" Heater Hose or -10 A/C Hose	\$13.95
BIL 68729	0.906 X 1.125	\$13.95
BIL 68820	1.015 x 1.015	\$13.95



COOLING

*All prices are subject to change without notice.

Billet Specialities™ - Hose Ends



Machined from billet aluminum with a polished finish. (Each Sold Separately.)

Part #	Details	Price
BIL 67025	5/16" Fuel - Braided	\$11.95
BIL 67225	3/8" Fuel - Rubber	\$11.95
BIL 67325	3/8" Fuel - Braided	\$11.95
BIL 67425	5/8" Heater - Rubber	\$13.95
BIL 67525	5/8" Heater - Braided	\$13.95
BIL 67625	3/4" Heater - Rubber	\$13.95
BIL 67725	3/4" Heater - Braided	\$13.95
BIL 67825	1-1/2" Radiator	\$21.95
BIL 67925	1-3/4" Radiator	\$21.95

Zoops® - Billet Hose Ends



Billet ends, priced per pair with clamps.

Part #	Details	Price
ZPI 7500	1 1/2" Radiator Hose Ends	\$44.95
ZPI 7501	1 3/4" Radiator Hose Ends	\$44.95
ZPI 7502	3/4" Heater Hose Ends	\$27.95
ZPI 7503	5/8" Heater Hose Ends	\$27.95

Gotta Show® - GM Transmission Cooler



GM transmission to frame mounted finned cooler (cooler included).

Part #	Details	Price
GSP 231106	Frame Mount Transmission Cooler	\$174.50

Gotta Show® - GM Transmission Hose Kits



GM Transmissions (ALL) To Radiator or Front Mounted Cooler

Part #	Details	Price
GSP 231101	GM transmission Hose Kit	\$132.00

Ford Transmissions (ALL) To Radiator or Front Mounted Cooler

Part #	Details	Price
GSP 231104	Transmission Hose Kit	\$132.00

Radiator Adapter for Walker, Ron Davis, C&R and Fluidyne Aluminum Radiators

Part #	Details	Price
GSP 231109	90 Degree Adapter 1/8" NPT to - 6 Male AN 90	\$9.50

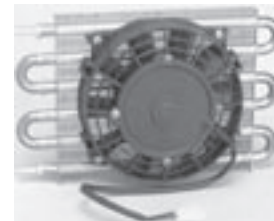
GM Radiator to -6 Male AN Adapter (90 Degree). Not included in any kit.

Part #	Details	Price
GSP 231102	90 Degree Factory Adapter	\$20.25

Flex-a-lite® - Fan-Equipped Transmission Cooler

Tube-and-fin design combines efficient aluminum fins with multi-pass copper tubing and a 300-cfm electric fan to deliver a hefty drop in transmission-fluid temperatures. With the addition of the fan, this does not have to be mounted in direct airflow to work. Dimensions: Oil Cooler, 7 1/2" X 10". X 3 1/8" Cooler, 7" Fan, 3/8" Hose Barb Fittings

Part #	Details	Price
MSD FLE4190	Remote Cooler with Fan	\$194.00



B&M Racing® - SuperCooler Transmission Coolers



BMM80278



BMM70265



BMM70255

B&M's SuperCooler oil coolers are made of lightweight aluminum, with an efficient "stacked plate" design. Multiple cooling paths give them the cooling capacity of larger fan-&-tube coolers.

Part #	Details	Price
MSD BMM70255	Inlet/Outlet 3/8" Hose barb (5.75" TX 11" WX 0.75" D) - Black Finish	\$58.95
MSD BMM70265	Inlet/Outlet 1/2" NPT (4.5" TX 11" WX 1.5" D) - Polished finish	\$67.95
MSD BMM80278	Transmission Cooler Mounting Kit - Mounts directly onto the radiator	\$10.95

Specialty Auto Tech® - Transmission Coolers

Compact design, 3" diameter, mounts in tight places, even on frame rails away from confined spaces between grills & radiators. Heat sink design has internal & external cooling fins to transfer heat & minimize the need for direct airflow. Cools better than conventional coolers when you need it most under 40 MPH. Also available polished - add a "P" to the end of part number.

Part #	Details	Price
SAI 1201	12" Single Pass	\$89.00
SAI 1201-2X	12" Dual Pass	\$112.00
SAI 1801	18" Single Pass	\$98.00
SAI 1801-2X	18" Dual Pass	\$124.00
SAI 2401	24" Single Pass	\$106.00
SAI 2401-2X	24" Dual Pass	\$136.00



Old Dog - Finned Transmission Coolers

Old Dog 3" Diameter Coolers are designed for maximum heat transfer. Finned aluminum coolers provide superior performance.

Part #	Details	Price
WYS WP0054	12" Dual Pass	\$76.95
WYS WP0056	18" Dual Pass	\$99.95
WYS WP0049	Transmission Cooler Line Kit (-6) - 44" Length	\$79.95



Radiator Cooling Fan Ties

Part #	Details	Price
MFA M0912T	Radiator Cooling Fan Ties (Set of Four)	\$8.00

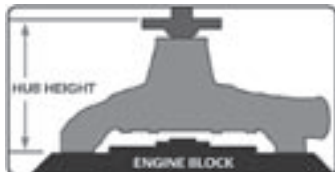


COOLING

*All prices are subject to change without notice.

Edelbrock® - Victor Series Water Pumps

To determine the hub height, measure the distance from the engine block to the mounting surface. Then match your results with the reference dimensions for your listing.



Optimum Cooling for AMC/Jeep, Chevy, Chrysler, Ford, & Pontiac
 Designed and cast at the Edelbrock Foundry and machined at Edelbrock's manufacturing facility in the USA, Edelbrock water pumps are the best in quality and performance. Edelbrock Victor Series water pumps provide maximum cooling for the street and the race track. They're ideal to prevent overheating in street rods and street machines, as well as in tow rigs and motorhomes. Using state-of-the-art racing technology, Edelbrock has designed these "super cooling" water pumps to provide maximum flow, maximum pressure and equal distribution to both sides of the block within 1%. Available for most popular applications, these high-performance pumps flow in only one direction for optimum efficiency. The casting's computer-designed internal passages and precision powdered metal impeller produce the maximum flow rate possible.

Chevrolet Small-Block - Standard Rotation, 5/8" Pilot Shaft, and 3/4" Ball/Ball Bearing.

Application	Height	Block-Hub Inlet Height	Inlet Size	Part #	Finish	Price
'55 - '68 S/B Passenger Cars, '69 - '70 Corvettes, & '55 - '72 Light Duty Trucks	Short	5 5/8"	1.80"	EDE 8810 EDE 8820 EDE 88104	Satin Polished EnduraShine	\$179.95 \$259.95 \$259.95
'68 - '87 S/B Chevy or 90 degree V6 passenger cars & '73 - '86 Light Duty Trucks Does not fit Corvettes (use EDE 8810 or EDE 8812) or late model vehicles with serpentine accessory drive belts (use EDE 8881)	Long	6 15/16"	1.80"	EDE 8811 EDE 8821 EDE 88114	Satin Polished EnduraShine	\$179.95 \$264.95 \$249.95

Chevrolet Big-Block - Standard Rotation, 5/8" Pilot Shaft, and 3/4" Ball/Ball Bearing.

Application	Height	Block-Hub Inlet Height	Inlet Size	Part #	Finish	Price
'65 - '68 B/B Chevy Passenger Cars, '66 - '72 Trucks & '69 - '70 B/B Corvettes	Short	5 3/4"	1.95"	EDE 8850 EDE 8860 EDE 88504	Satin Polished EnduraShine	\$199.95 \$275.95 \$269.95
'69 - 87 B/B & '88 - '91 Heavy Duty Truck w/Mark IV Engine Does not fit Corvettes or trucks over 1-Ton.	Long	7 5/16"	1.875"	EDE 8851 EDE 8861 EDE 88514	Satin Polished EnduraShine	\$199.95 \$279.95 \$279.95
'58 - '65 B/B Chevy 348/409 "W-Series" engines.	-	5 1/2"	1.95"	EDE 8858 EDE 88584	Satin EnduraShine	\$257.95 \$298.95

Ford Small-Block - 289/302/351W/351C/351M/400/5.0L/5.8L
 Standard Rotation, 5/8" Pilot Shaft, and 3/4" Ball/Ball Bearing.

Application	Height	Block-Hub Inlet Height	Inlet Size	Part #	Finish	Price
'65 - '68 289, '68 - '69 302, '69 351W engines & includes right-hand inlet w/back plate	-	5.42"	1.78"	EDE 8841 EDE 8846 EDE 88414	Satin Polished EnduraShine	\$164.95 \$249.95 \$239.95
'65 - '67 289 Special "K" Engine Code w/Right-Hand Inlet, no back plate	-	5.16"	1.78"	EDE 8842 EDE 8847	Satin Polished	\$179.95 \$257.95
'70 - '78 302, '70 - '87 351W Engines w/Left-Hand Inlet & back plate	-	5.70"	1.78"	EDE 8843 EDE 8848	Satin Polished	\$169.95 \$255.95

Tuff Stuff Performance[®] - Chrome Water Pumps

New chrome Chevy water pumps – cast iron housing.

Part #	Details	Price
TSP 1354NA	Small Block Short	\$95.95
TSP 1354NB	Small Block Short - Supercool	\$97.95
TSP 1449NA	Small Block Long (Single Groove Pulley – Only)	\$119.95
TSP 1449NB	Small Block Long - Supercool	\$123.95
TSP 1494NA	Big Block Short	\$118.95
TSP 1494NB	Big Block Short - Supercool	\$128.95
TSP 1461NA	Big Block Long	\$133.95
TSP 1461NB	Big Block Long - Supercool	\$144.95



Tuff Stuff Performance[®] - Platinum Short Water Pumps

Small Block Chevy (Short) new lightweight aluminum water pumps. Fits 1955-68 small block Chevy.

Part #	Details	Price
TSP 1394NA	Chrome	\$166.95
TSP 1394NB	Polished	\$149.95
TSP 1394NC	Plain	\$131.95



Tuff Stuff Performance[®] - Platinum Long Water Pumps

Small Block Chevy (Long), fits 1969-88 small block Chevys and '90 V6's.

Part #	Details	Price
TSP 1511NA	SBC Long Water Pump - Chrome Aluminum	\$166.95
TSP 1511NB	SBC Long Water Pump - Polished Aluminum	\$150.95



Tuff Stuff Performance[®] - Reverse Flow Water Pumps

Part #	Details	Price
TSP 1354NAREV	Small Block Short, Chrome	\$96.95
TSP 1449NAREV	Small Block Long, Chrome	\$125.95
TSP 1494NAREV	Big Block Short, Chrome	\$116.95
TSP 1635NG-REV	SBC Short, Aluminum with 3/4" Shaft	\$164.95



Tuff Stuff Performance[®] - Ford Chrome Water Pump

Part #	Details	Price
TSP 1432A	1965 - 73 289, 302, 351 with Passenger Side Inlet	\$101.95
TSP 1468A	1970 - 78 Windsor with Driver Side Inlet	\$98.95



COOLING

*All prices are subject to change without notice.

Mr. Gasket® - Small Block Ford Water Neck



These Mr. Gasket chrome plated water necks feature an O-ring style seal to prevent water leaks. These water necks come complete with an O-ring and mounting bolts.

Part #	Details	Price
MSD MRG2662	45 Degree, Ford, 221-302/351W	\$13.99

Billet Specialties™ - Small Block Ford Water Neck



Billet Specialties small block Ford swivel thermostat housing is precision machined from 6061-T6 billet aluminum and polished to a mirror finish. Features a swivel neck for proper hose angle. The neck is 360-degree brazed to the tower for superior leak free operation. Four Buna N® o-rings ensure a positive seal to the manifold eliminating the need for a gasket or sealant. Includes stainless mounting hardware.

Part #	Details	Price
BIL 90620	Small Block Ford Thermostat Housing	\$94.95

Billet Specialties™ - Aluminium Thermostat Housing



All thermostat housings are machined from billet aluminum and feature a positive O-ring seal which eliminates the need for gaskets or sealant.

Part #	Details	Price
BIL 90120	Straight Up	\$34.95
BIL 90320	15 Degrees	\$74.95
BIL 90220	0 Degree	\$74.95
BIL 90420	45 Degrees	\$74.95

Racing Power Company® - Aluminum Thermostat Housing



Early Chevy Water Neck, O-Ring Style with Swivel Neck

Part #	Details	Price
RPC S6002	Straight Up	\$27.95
RPC S6003	45 Degrees	\$36.95
RPC S6009	90 Degrees	\$36.95

Stewart Components® - Extra Performance Thermostats



These thermostats are for most domestic application and feature a balanced - sleeve design. They are constructed for high-flow, high RPM applications and are strongly recommended for Performance vehicles.

Part #	Details	Price
MSD STE300	160 Degree	\$17.75
MSD STE301	180 Degree	\$17.75
MSD STE302	195 Degree	\$16.75

Moroso® - Inline Radiator Hose Filler

These aluminum radiator hose fillers are spliced into the upper radiator hose to provide more complete cooling system filling. They take a standard size radiator cap and the cap receptacle is welded to a cast flange.

Part #	Details	Price
MSD MOR63730	1.5" X 1.5"	\$31.95
MSD MOR63745	1.25" X 1.25"	\$29.95



Mr. Gasket® - Chrome Plated Heater Hose Fittings

Chrome steel 1/2" Male NPT straight fittings.

Part #	Details	Price
MSD MRG9743	3/4" Hose Barb	\$10.95
MSD MRG9744	5/8" Hose Barb	\$10.99



Vintage Air® - Stainless Steel Heater Hose Fittings

Stainless Steel 1/2" Male NPT Straight Fittings

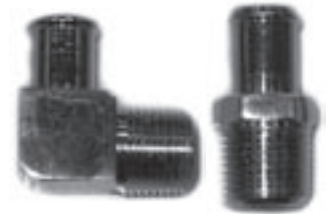
Part #	Details	Price
VAC 501002-SUR	5/8" x 1 7/8" Hose Fitting	\$13.95
VAC 50101-SUR	5/8" x 2 7/8" Hose Fitting	\$16.95



Gardner-Westcott Company® - Heater Hose Fittings

These chrome plated hose fittings are available in straight and 90 degree configuration.

Part #	Details	Price
GWC J9001	90 Degree - 5/8" Hose x 1/2" Pipe	\$23.03
GWC J9002	90 Degree - 5/8" Hose x 3/8" Pipe	\$17.11
GWC J9003	Straight Fitting - 5/8" Hose x 1/2" Pipe	\$8.95
GWC J9004	Straight Fitting - 5/8" Hose x 1/2" Pipe	\$10.58
GWC J9005	Straight Fitting - 3/4" Hose x 1/2" Pipe	\$10.96



Billet Specialties™ - Radiator Caps

These radiator caps have a knurled grip sides in your choice of 7 lb. and 16 lb. caps. Billet tops are packaged unassembled with the radiator cap to allow proper positioning of logo.

Part #	Details	Price
BIL 76120	Plain - 7 lb.	\$19.95
BIL 75120	Plain - 16 lb.	\$19.95
BIL 76220	Circle - 7 lb.	\$19.95
BIL 75220	Circle - 16 lb.	\$19.95
BIL 76320	Bowtie - 7 lb.	\$19.95
BIL 75320	Bowtie - 16 lb.	\$19.95
BIL 76420	V8 - 7 lb.	\$19.95
BIL 75420	V8 - 16 lb.	\$19.95
BIL 76620	Heartbeat - 7 lb.	\$19.95
BIL 75620	Heartbeat - 16 lb.	\$19.95
BIL 75820	Flame - 16 lb.	\$19.95
BIL BLK75120	Plain - 16 lb. Black Anodized	\$19.95



COOLING

*All prices are subject to change without notice.

Billet Specialties™ - Notch Grip Radiator Caps



These radiator caps have a notched edge for easy cap removal. Available only in 16 lb.

Part #	Details	Price
BIL 75125	Notch Grip Cap - Polished	\$24.95
BIL BLK-75125	Notch Grip Cap - Black Anodized	\$29.95

Walker Radiator Works® - Radiator Cap



Add that final touch of class. For open or the new closed systems.

Part #	Details	Price
WRW WC-7	7 lbs - Chrome	\$22.90
WRW WC-15	15 lbs - Chrome	\$22.90

Zoops® - Billet Aluminum Radiator Caps



CNC machined billet aluminum-polished with a 17 lb. radiator cap.

Part #	Details	Price
ZPI 9020N	Newstalgia Style with Shallow-Ribbed Fins	\$17.95
ZPI 9021	Smooth, Plain Style	\$17.95

Sun Spec® - Billet Radiator Cap



Part #	Details	Price
SUN 1402	Brushed 14 lb Billet Radiator Cap	\$16.00
SUN 1403	Polished 14 lb Billet Radiator Cap	\$19.95

Mooneyes® - Finned Radiator Cap Cover

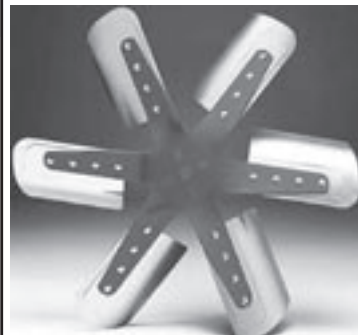


Part #	Details	Price
MOO AA21450L	Finned Radiator Cap Cover	\$29.95

Flex-a-lite® - Wide Blade Flex Fans

The Flex-a-lite wide blade flex fans build horsepower by flattening out at high rpm to reduce drag. And because they're lightweight, they help prolong your water pump's lifespan. Safe to 10,000 rpm.

Part #	Details	Price
MSD FLE1313	13" - Stainless Steel	\$42.95
MSD FLE1314	14" - Stainless Steel	\$44.95
MSD FLE1315	15" - Stainless Steel	\$45.95
MSD FLE1316	16" - Stainless Steel	\$47.95
MSD FLE1317	17" - Stainless Steel	\$48.95
MSD FLE1318	18" - Stainless Steel	\$49.95
MSD FLE1350	15" - Chrome	\$92.95
MSD FLE1360	16" - Chrome	\$99.95
MSD FLE1370	17" - Chrome	\$97.95
MSD FLE1380	18" - Chrome	\$97.95
MSD FLE1516	16" - Serpentine - Stainless Steel	\$59.95
MSD FLE1517	17" - Serpentine - Stainless Steel	\$61.95



Aluminum Fan Spacers

Required for max air transfer. Fan should be 2 - 4" from radiator. Complete with bolts. Fits 5/8" shaft.

Part #	Details	Price
MSD MRG2391	1/2"	\$12.50
MSD MRG2392	1"	\$13.95
MSD MRG2393	2"	\$14.95



Racing Power Company® - Chrome Fan Shrouds

Part #	Details	Price
RPC S9453	3" Wide x 20" Diameter	\$21.95
RPC S9454	5" Wide x 20" Diameter	\$23.95



Maradyne® - High Performance Fans

Champion Series

Reversible S-blade design provides lower noise. Sealed Motor is dust and water resistant and can be sprayed clean. All plastic is glass filled nylon. No inferior polypropylene mixes. Provides highest temperature and highest impact resistant material used in the market.

Part #	Details	Depth	Price
MFA M083K	8" - 540 CFM	2.48"	\$69.95
MFA M103K	10" - 950 CFM	2.48"	\$84.95
MFA M113K	11" - 1110 CFM	2.48"	\$87.95
MFA M122K	12" - 1565 CFM	3.19"	\$104.95
MFA M123K	12" - 1155 CFM	2.48"	\$89.95
MFA M142K	14" - 2135 CFM	3.19"	\$109.95
MFA M146K	14" - 1555 CFM	2.87"	\$107.95
MFA M162K	16" - 2170 CFM	3.19"	\$115.95
MFA M166K	16" - 1810 CFM	2.87"	\$105.95



COOLING

*All prices are subject to change without notice.

Maradyne[®] - Universal Fan Brackets



Two billet aluminum brackets with 4 adjustable side angle brackets attach to side flange of radiator. Kit includes four (4) each bolts, washers and nylon lock nuts for mounting fan. Fits 14" and 16" Maradyne electric fans.

Part #	Details	Price
MFA MFA105	Fan Brackets	\$42.95

Maradyne[®] - Dual High Performance Fans



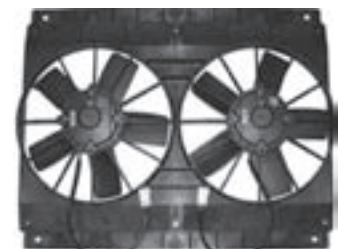
JETSTREME SERIES

Jetstreme Series

Low profile allows for turbo Dual 160 watt high-performance water and dust resistant motors with 12" quiet S-blade design. All glass-filled nylon construction w/rubber seal eliminates vibration contact and increases air flow.

SPECIFICATIONS: 160 watt heavy duty motor, 2600 CFM Airflow at 0" static, 15" W X 26" H, 3.66" Deep with rubber seal, 3.25" Deep without rubber seal, 14.4 AMP draw.

Part #	Details	Price
MFA MJS26K	Jetstreme Dual II	\$220.95



MACH SERIES

Mach Series

Dual 225 high performance drip through motors. All glass-filled nylon construction. Fits most GM cross-flow radiators with a minimum size of 23.5" x 15.75".

SPECIFICATIONS: 255 watt heavy duty motor, 2760 CFM Airflow at 0" static, 23.5" W X 15.75" H without flanges, 3.80" Deep, 22.0 AMP draw.

Part #	Details	Price
MFA MM22KS	Mach II with Side Flanges	\$249.00
MFA MM22KT	Mach II with Top & Bottom Flanges	\$249.95

Maradyne[®] - Fan Relay Wire Harnesses



Part #	Details	Price
MFA 100	Wire Harness, Adjustable Radiator Temperature Switch & Relay	\$55.95
MFA 101	Wire Harness with Relay	\$32.95
MFA 102	Wire Harness, Engine Temperature Switch and Relay	\$55.95
MFA 103	Wire Harness, Engine Temperature Switch and Relay	\$55.95
MFA 111	Dual Fan Adapter	\$30.95
MFA 120	Wire Harness, Adjustable Engine Temperature Switch	\$20.95

Zirgo[™] - High Performance Electric Fans



Zirgo high torque fan motors feature sealed ball bearings and fully balanced blades which insure low noise levels and a long life of smooth operation. To insure maximum performance, all Zirgo fans offer reversible blades allowing them to operate as pushers or pullers.

Part #	Fan Diameter	CFM	Width	Height	Depth	Price
ULTRA-High Performance						
HOF ZFU14	14"	3000	14	14.8	3.5	\$125.00
HOF ZFU16S	16" S-Blade	3630	16	16.7	4.0	\$225.00
Chrome						
HOF ZFBC14S	14" S-Blade	2122	14	14.8	3.5	\$129.95
HOF ZFBC16S	16" S-Blade	3000	16	16.7	3.5	\$149.95

*All prices are subject to change without notice.

Zirgo™ - Fan Wire Harness

Part #	Details	Price
HOF ZFPL	Zirgo Fan – Wire Harness	\$6.95



Keep It Clean Wiring® - 40 AMP Relay

Keep It Clean's heavy duty 40-amp relays are the best choice for any type of 12-volt wiring project. The Single pole/Double throw relay will never get stuck or short out on you. Save yourself hours of wiring time by combining our heavy duty relays with our relay sockets!

Part #	Details	Price
HOF RA1000	Keep It Clean – 40 AMP Relay	\$14.95
HOF RAS12	Keep It Clean – Relay – Socket	\$7.95



Haywire® - Adjustable Thermostat

Allows the electric radiator fan to engage at the temperature you want. Probe mounts in the radiator's petcock. Fittings and mounting bracket are included.

Part #	Details	Price
HAY D3401	Adjustable Thermostat	\$36.95



Painless® - Fan Relays

Fan-Thom Electric Fan Relay

Provides inexpensive protection for your electric fan. Provides constant voltage, provides from voltage and amperage spikes and keeps fan from feeding back through the system. An absolute necessity if adding an on/off switch to your electric fan circuit.

Part #	Details	Price
PPP 30101	Fan-Thom Electric Fan Relay	\$36.95

Fan-Thom II Electric Fan Relays w/Thermostat Protection

The Fan-Thom II comes with a threaded thermostat that screws into the engine block or manifold for a professional installation. Thermostat thread size: 3/8" – 18NPTF fitting.

Part #	Details	Price
PPP 30102	200 Degree On / 185 Degree Off Relay w/Thermostat	\$77.95
PPP 30103	185 Degree On / 170 Degree Off– Relay w/Thermostat	\$74.95

Thermostat Only

PPP 30110	200 Degree On / 185 Degree Off	\$41.95
PPP 30111	185 Degree On / 170 Degree Off	\$38.95



Zirgo™ - Adjustable Temp Control Switch

Zirgo's temperature controlled cooling fan kits allow you to set the temperature at the degree you want the cooling power of your Zirgo fan to kick in. This is perfect for engines with an optimal operating temperature greater than 180 degrees. The adjustable temperature control allows you to set the activation temperature from 180 degrees to 240 degrees.

Part #	Details	Price
HOF ZFSWA	Adjustable Temp Control Switch	\$35.95



COOLING

*All prices are subject to change without notice.

Zirgo™ - Digital Adjustable Temp Control



Zirgo's digital temperature switch allows you to monitor and control the most remote area of your vehicle. Zirgo's digital temperature switch can be set to monitor the air temperature around the unit. Ideal for monitoring engine compartments, glove boxes, radio/amp inclosures, and much more. Zirgo's digital temperature probe may also be used to monitor hard reach areas, or even coolant temperature! This is perfect for engines with an optimal operating temperature greater than 180 degrees. The adjustable temperature control allows you to set the activation temperature from 180 degrees to 240 degrees.

Part #	Details	Price
HOF ZFSDG	Digital Adjustable Temp Control Switch with Probe	\$69.95

Cooling Components® - Fans and Shrouds

Constructed of high density polyethylene. High efficiency & low noise design, 300 Watt 12 Volt 2-Speed motor, and 2500 CFM. Only 2 5/8" clearance needed. ALL 1700 Series Fans Require a 70 Amp Relay (Not Included in Purchase Price. See "Electrical" section for relays).

Part #	Details	Price
CCI 1730*	18 1/2" Wide x 20 1/4" High x 2 5/8" Deep	\$278.00
CCI 1740	24" Wide x 18" High x 2 5/8" Deep	\$278.00
CCI 1750	18" Wide x 22 1/2" High x 2 5/8" Deep	\$278.00
CCI 1770	21 1/2" Wide x 19 1/2" High x 2 5/8" Deep	\$278.00
CCI 1780	26" Wide x 20" High x 2 5/8" Deep	\$278.00
CCI 1790	26" Wide x 16 1/2" High x 2 5/8" Deep	\$278.00

Fan Shrouds available for:

Buick	1941 - 52 Car	CCI-1770	1933 PD	CCI-1770	
1931 - 49 Car	CCI-1750, 1730	1960 - 72 Car	CCI-1780	1934 PE	CCI-1770
1950 - 57 Car	CCI-1740	1950 Truck	CCI-1770	1934 PF	CCI-1770
1958 - 70 Car	CCI-1780	1954 - 57 Truck	CCI-1740	1935 - 36	CCI-1750
Cadillac		Ford	1939	CCI-1750	
1936 - 56 Car	CCI-1770	1917 - 29 Car	CCI-1720	1940	CCI-1750N
1957 - 70 Car	CCI-1780	1930 - 36 Car	CCI-1750, 1730	1941 - 55	CCI-1770
Chevy		1963 - 75 Car	CCI-1780	Pontiac	
1929 - 41 Car	CCI-1750, 1730	1937 - 39 Car Standard	CCI-1730	1931 - 40 Car	CCI-1750, 1730
1942 - 46, 58 Car	CCI-1770	1939 - 47 Car Deluxe	CCI-1740	1941 - 48 Car	CCI-1770
1949 - 57 Car	CCI-1740	1942 - 56 Car	CCI-1770	1949 - 54 Car	CCI-1740
1929 - 46 Truck	CCI-1750, 1730	1917 - 29 Truck	CCI-1720	1964 - 79 Car	CCI-1780
1947 - 54 Truck	CCI-1770	1930 - 34 Truck	CCI-1750, 1730	1967 - 69 Firebird	CCI-1740
1955 - 59 Truck	CCI-1740	1935 - 52 Truck	CCI-1770	1970 - 79 Firebird	CCI-1780
1960 - 65 Truck	CCI-1780	1940 - 52 Truck	CCI-1740	1964 - 67 GTO 15.5"	CCI-1790
1966 - 72 Truck	CALL	1953 - 65 Truck	CCI-1780	1964 - 67 GTO 17"	CCI-1780
1959 - 70 Impala 15.5"	CCI-1790	1955 - 57 T-Bird	CCI-1770	*CCI-1730 Fan gives more clearance at water pump.	
1959 - 70 Impala 17"	CCI-1780	1961 - 66 T-Bird	CCI-1780		
1962 - 67 Nova	CCI-1790	1967 - 69 T-Bird	CCI-1740		
1967 - 69 Camaro	CCI-1740	1970 - 79 T-Bird	CCI-1780		
1970 - 79 Camaro	CCI-1780	1964 - 69 Mustang	CCI-1720		
1964 - 69 Chevelle 15.5"	CCI-1790	Oldsmobile			
1968 - 77 Chevelle 17"	CCI-1780	1935 - 37 Car	CCI-1750, 1730		
1970 - 79 Monte Carlo	CCI-1780	1938 Car	CCI-1770		
Desoto		1939 - 40 Car	CCI-1750		
1942 - 48 Car	CCI-1740	1941 - 48 Car	CCI-1770		
1949 - 54 Car	CCI-1770	1950 - 53 Car	CCI-1740		
Dodge		1956 - 76 Car	CCI-1780		
1933 Car	CCI-1750, 1730	Plymouth			
1936 Car	CCI-1750, 1730	1932 PB	CCI-1750N		



Walker Radiator Works[®] - Radiators

Cobra Standard Series: Designed for basic small block engine applications that are stock throughout. Complete with pressure system and oil cooler for your automatic transmission.

Cobra Standard Cool-Mate Series: This is a complete cooling package for your street rod. A Cobra radiator with transmission oil cooler and air-condition condenser for stock engine applications.

Cobra Z-Series: The ultimate in cooling system radiators. Born to cool the massive boss big block engines, this design radiator is a must for ultra heavy-duty applications (w/transmission oil cooler).

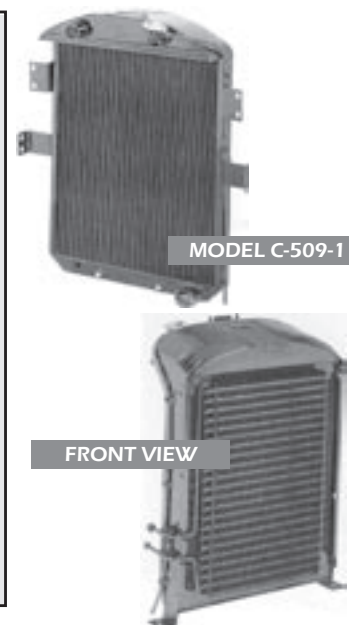
Cobra Z Cool-Mate Series: The same cooling power as the Z Series with all the extras needed for modified engines (w/transmission oil cooler and air-condition condenser).

Radiators available for:

'28 - '53 Ford/Mercury Cars
'32 - '57 Chevy Cars
'32 - '48 Plymouth Cars

'28 - '52 Ford Trucks
'32 - '59 Chevy Trucks
'33 - '57 Dodge Cars/Pickups

Please call for pricing and availability.



Walker Radiator Works[®] - Fan Shroud

Increases coolant temperature drop in your radiator up to 30 degrees. Made of high density Polyethylene. A high Impact, heat resistant material.

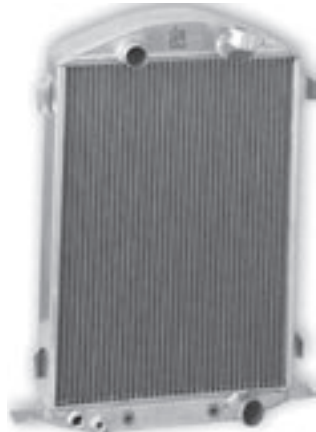
Part #	Details	Price
WRW-WS-40	'39 - '40 Ford Deluxe, '41 Ford	\$76.47
WRW-WS-55A	'31 Ford	\$76.47
	'36 - '38, '48 - '49 Buick	
	'37 - '40, '46 Chevy Truck	
	'31 - '32, '36 - '37 Pontiac	
	'32 Plymouth (P.A. & P.B.)	
WRW-WS-60	'37 - '39 Ford Standard	\$76.47
WRW-WS-70	'42 - '51 Ford	\$76.47
	'46 - '48 Chevy	
	'47 - '53 Chevy Truck	
	'41 - '48 Plymouth	
	'48 Dodge	



COOLING

*All prices are subject to change without notice.

Griffin[®] - Aluminum Radiators



STREET RODS



CLASSIC/TRUCKS



MUSCLE CARS

Whether you have a Street Rod, Truck, or highly customized vehicle, Griffin has the radiator for you. Available in direct bolt-in units, or special designs to meet your mounting requirements. You can count on Griffin to provide you with a radiator that will perform at both highway and crusin' speeds. Please call for availability and quote. Please call for prices and availability.

Street Rods

- 1929 - 48 Chevrolet
- 1935 - 48 Chevrolet Trucks
- 1937 Buick
- 1948 Cadillac
- 1937 Pontiac
- 1923 - 48 Ford
- 1933 - 48 Ford Trucks
- 1947 - 48 Plymouth

Muscle Cars

- 1959 - 70 Chevrolet
- 1969 AMX
- 1967 - 79 Camaro
- 1966 - 73 Charger
- 1964 - 77 Chevelle
- 1965 - 70 Coronet
- 1961 - 76 Corvette
- 1967 - 76 Dart
- 1968 - 70 El Camino
- 1964 Dodge
- 1964 - 71 Nova
- 1964, 68 - 69 Barracuda
- 1965 - 66 Buick
- 1968 - 69 Barracuda
- 1965 Cutlass
- 1965 - 68 Belvedere
- 1964 - 71 GTO
- 1970 - 73 Challenger
- 1962 - 69 Fairlane
- 1970 - 76 Duster
- 1966 Falcon
- 1964 Fury
- 1960 - 67 Galaxie
- 1968, 69, 71 GTX
- 1965 - 70 Mustang
- 1964 Plymouth
- 1966 - 69 T-Bird
- 1969 - 73 Road Runner
- 1968 - 71 Torino
- 1966, 68, 70 - 73 Satellite

Classic Cars / Trucks

- 1949 - 64 Chevrolet
- 1949 - 62 Chevrolet Trucks
- 1959 El Comino
- 1949 - 64 Ford
- 1949 - 60 Ford Trucks

AFCO[™] - Aluminium Radiator



The cooling performance of these radiators are second to none. 100% Pressure tested no sealers used or needed. It's the attention to detail that makes AFCO your first choice in radiators. Keep your vehicle running cool. Please call an Old Dog Representative for your application and pricing.

AFCO Aluminum Radiator Features:

- ♦ 100% Aluminum Construction No Epoxy
- ♦ 100% TIG Welded
- ♦ 100% Pressure Tested
- ♦ Available with Built-In Transmission Cooler
- ♦ Welded In Mounting Tabs
- ♦ Filler Necks Feature Screw-In Bleed
- ♦ Correct Mounting Holes
- ♦ Correct Center-to-Center Inlets and Outlets

Be Cool® - Aluminum Street Rod Radiators

A high-quality Be Cool all-aluminum radiator will lower your coolant temperature a minimum of 20 degrees, or your money back **GUARANTEED!** In fact most users report even greater coolant temperature drops compared to a conventional copper/brass/lead design. Every Be Cool radiator uses fluted oval tubes to "Turbulate" the passing water for maximum exposure to the outer wall of the radiator tube. Radiators are available in Natural or Polished finish. Most radiators in stock have a natural finish, polished radiators are ordered on request. **Please call for prices and availability.**



Be Cool® - Radiator Accessories

Be-Cool Billet Radiator Caps – with Logo

Part #	Details	Price
BCO 70001	Round	\$39.95
BCO 70002	Octagon	\$39.95

Be-Cool Aluminum A/C Condensers

Part #	Details	Price
BCO 76001	14" x 18 1/4" A/C Condenser	\$225.00

Be-Cool Electric Fans

Part #	Details	Price
BCO 75001	16" Pull Fan - 2360 CFM (3.39" Deep)	\$210.00
BCO 75002	16" Push Fan - 2360 CFM (3.39" Deep)	\$210.00
BCO 75014	16" Pull Fan - 1610 CFM Medium Profile (2.48" Deep)	\$135.00
BCO 75033	16" Chrome Pull Fan	\$399.95
BCO 75058	16" Pull Fan - Thin Line	\$79.95

Be-Cool Electric Fan Wire Harness

Kit includes relay, in-line fuse and thermostat (on - 195 degrees, off 175 degrees).

Part #	Details	Price
BCO 75021	Fans Wire Harness	\$85.00



BC076001



BC075021

Billet Specialities™ - Overflow Tanks

Constructed from billet aluminum these overflow tanks include adjustable mounting hardware that allows placement along the entire length of the tank. All tanks have a knurled and threaded cap with an O-ring seal for easy removal. Lengths specified are of the tank, overall measurement is 1 1/2" longer than listed. Diameter is 2 inches.

Part #	Details	Price
BIL 77109	Smooth Overflow - 8.75"	\$121.95
BIL 77113	Smooth Overflow - 13" - 10 oz. Capacity	\$96.95
BIL 77115	Smooth Overflow - 15" - 13 oz. Capacity	\$96.95
BIL 77117	Smooth Overflow - 17" - 16 oz. Capacity	\$96.95
BIL 77213	Ribbed Overflow - 13" - 10 oz. Capacity	\$96.95
BIL 77215	Ribbed Overflow - 15" - 13 oz. Capacity	\$96.95
BIL 77217	Ribbed Overflow - 17" - 16 oz. Capacity	\$96.95



COOLING

*All prices are subject to change without notice.

Racing Power Company[®] - Stainless Overflow Tanks



Includes Billet Cap and Mounting Bracket.

Part #	Details	Price
RPC S6072X	Stainless Overflow Tank (2" X 13")	\$51.95
RPC S6073X	Stainless Overflow Tank (2" X 15")	\$51.95
RPC S6074X	Stainless Overflow Tank (2" X 17")	\$51.95
RPC S6075X	Stainless Overflow Tank (2" X 19")	\$51.95
RPC S6076X	Stainless Overflow Tank (3" X 10")	\$51.95

DEi[®] - Radiator Relief Additive



Radiator relief is specially formulated to enhance cooling system performance by maximizing the thermal transfer ability of the anti-freeze / water solution or just plain water. Add bottle to radiator. No mixing. Runs up to 30 degrees cooler.

Part #	Details	Price
DEI 040200	Radiator Relief - 16 oz Bottle	\$8.95

Pro-Blend Motorsports[®] - Cooling System & Cooling Lubricants



4030G



4012



8080

28 Below – Economy Street Version (1 gallon)

Stops overheating, cools like ice water, and lowers water temperature up to 28 degrees. Reduces rust corrosion and cleans the cooling system.

Part #	Details	Price
PBM 4030G	28 Below - Economy Street Version (1 Gallon)	\$22.00

Trans Cool

Add To ATF. Reduces fluid temperature up to 57 degrees. Stops excessive wear. Makes older units shift like new. Dramatically improves shifting in hot & cold weather. Easily doubles transmission life. A must for towing, climbing or stop and go traffic. Can increase fuel mileage.

Part #	Details	Price
PBM 4012	Trans Cool	\$14.50

Engine Racing Formula

Add to severe duty, high stress and performance engines. Cools oil up to 57 degrees. Eliminates oil starvation bearing failure, piston scuffing, galling blueing, metal transfer, valve train drag and foaming. Eliminates condensation in gas and alcohol engines. A must for all Circle, Drag, Blown, Turbo, Nitrous, Pro Street and Marine applications.

Part #	Details	Price
PBM 8080	Engine Racing Formula	\$14.00